



Bookstore Manager

Technical Information Document

Christian Books and More Database Export

Document Information:

Category	Database Export	O/S	Any	Last Modified	11/3/2006
Author	RV – SP				

Document Summary

Information fact sheet for using the Christian Books and More database export.

Document Contents

Who do I contact for purchase information?	1
Are there free samples of the database export files available?	1
What data is available in the CB&M Export?	2
Can I use the data on the Internet?	2
What format is the ASCII data in?	2
How many files are necessary for level 1, 2 and 3 exports?	2
How are the different data files for level 3 related?	3
How do I interpret the CPC and CMTA codes?	4
How are the image files named, and how does the image directory structure work?	4
How often are the data files updated?	4
How do I get the data?	4
Does CB&M provide information on gift products?	3
Does CB&M provide information on out of print products?	4
What type help-desk is available and who do I contact for it?	4
In addition to the data files, do all levels include a stand-alone working copy of the Windows version of CB&M?	5
Are there any “quirks” with the ASCII data that I need to be aware of?	5
Can I get a refund if I don’t like the export?	5
What are the steps to importing CSV files into Microsoft Access?	6

Who do I contact for purchase information?

For purchase information, please call 800-997-6724 or send an email to sales@bsmgr.com.

Are there free samples of the database export files available?

You can download free sample files from www.ChristianDatabase.com, or www.ChristianBooksAndMore.com. Click on “Database Exports” on the left side of the screen to see the samples available.

What data is available in the CB&M Export?

1. Level 1 includes
 - Primary Item #
 - Secondary Item #
 - Title/Description
 - Contributor
 - Publisher
 - Publication Date
 - U.S. Retail
 - Binding
 - CPC or CMTA product category codes
 2. Level 2 includes level 1 data plus images.
 3. Level 3 includes level 1 data, images and
 - Up to three contributors for products that have multiple contributors
 - Table of contents information for thousands of books
 - Song titles for thousands of CD's and cassettes
 - Additional Bible information for many Bibles including
 - 1) Print Size
 - 2) Height
 - 3) Width
 - 4) Thickness
 - 5) Weight
 - 6) Red Letter
 - 7) Indexed
 - 8) Indexable
 - 9) References
 - 10) Concordance
 - 11) Maps
 - 12) Gilded
 - 13) Presentation
 - 14) Family
 - 15) Ribbon
 - 16) Closure
 - 17) Introductions
 - 18) Illustrations
 - 19) Outlines
 - 20) Boxed
- Valid entries are "Y", "N" or a blank space for "Unknown".*

Can I use the data on the Internet?

Level 2, 3 and 4 subscriptions include a license for use on a single web site.

What format is the ASCII data in?

1. ASCII Fixed Length – Files ending with a ".TXT" extension
2. ASCII Comma Separated Values (CSV) – Files ending with a ".CSV" extension
3. XML – Files ending with a ".XML" extension

What files come with the level 1, 2, 3 and 4 exports?

1. Level 1 includes:
 - **CBMOUT1.CSV** (*in CBMCSV1.ZIP*) – All CB&M data items combined into one data file in comma separated values (CSV) format with level 1 data fields. The first record contains the field names. NOT licensed for Internet usage.
2. Level 2 includes:
 - Level 1 data file
 - Product images in JPG format provided monthly via CD
 - License for data and image use on a single web site

3. Level 3 includes:

- **BOOKS.CSV** (*in CSVXPRT.ZIP*) – entire CB&M in-print books database in comma separated values (CSV) format with multiple contributors. The first record contains the field names.
- **BIBLE.CSV** (*in CSVXPRT.ZIP*) – entire CB&M in-print Bible database in comma separated values (CSV) format with additional Bible information. The first record contains the field names.
- **MUSIC.CSV** (*in CSVXPRT.ZIP*) – entire CB&M in-print music database in comma separated values (CSV) format. The first record contains the field names.
- **INTLBOOK.CSV** (*in CSVXPRT.ZIP*) – entire CB&M in-print international books database in comma separated values (CSV) format. The first record contains the field names.
- **SOFTWARE.CSV** (*in CSVXPRT.ZIP*) – entire CB&M in-print software database in comma separated values (CSV) format. The first record contains the field names.
- **SONGS.CSV** (*in CSVXPRT.ZIP*) – entire list of song titles for recorded and accompaniment music products in comma separated values (CSV) format. The first record contains the field names.
- **CBMOUT3T.XML** (*in CBMOUT3T.ZIP*) – Table of Contents/Preview Text in an XML format.

```
<?xml version="1.0" standalone="yes"?>
<CBM_TOC_Preview>
  <ITEM ID="1">
    <CONTENTS><![CDATA[table of contents information]]></CONTENTS>
    <PREVIEW><![CDATA[preview information]]></PREVIEW>
  </ITEM>
  <ITEM ID="2">
    <CONTENTS><![CDATA[table of contents information]]></CONTENTS>
    <PREVIEW><![CDATA[preview information]]></PREVIEW>
  </ITEM>
  .
  .
  .
</CBM_TOC_Preview>
```

- Product images in JPG format
- License for data and image use on a single web site

4. Level 4 includes:

- All Level 3 data files
- **GIFTS.CSV** (*in GIFTSCSV.ZIP*) – entire CB&M in-print gift database in comma separated values (CSV) format. The first record contains the field names.
- Product images in JPG format
- License for data and image use on a single web site

Does CB&M provide information on gift products?

Yes, in the level 4 database export subscription.

Does CB&M provide information on out of print products?

Yes, in a level 1 data format only. The data is in a comma separated values (CSV) file named **CBMOUTOP.CSV** (in *CBMCSVOP.ZIP*). The first record contains the field names.

How are the different data files for levels 3 and 4 related?

Song title and table of content/preview data are linked using the primary item number.

How do I interpret the CPC and CMTA codes?

The CPC codes are defined at www.cpsg.org.

The CMTA codes are defined at www.cmta.com.

How are the image files named, and how does the image directory structure work?

1. The image files are named using the primary item number for the product with which the image is associated.
2. The directory structure for the image files is based upon the last character of the primary item number. The valid directories are 0-9 and X. Here are two examples.
 - Image file for primary item number 0310227550 would be \0\0310227550.jpg
 - Image file for primary item number 031024904X would be \X\031024904X.jpg
3. To allow subscribers to show images for items that actually have no associated image, CB&M will sometimes use the same image for related products, ie. CD and Cassette. For example, assume the CD's primary item # is 123 and its' image is 123.jpg. Assume also that the Cassettes primary item # is 456. If CB&M is using same image for the cassette as it is for the CD, there will be an entry in the cassette's' "Linked Item Number" field of 123 designating to use file 123.jpg as the image file for item number 456. *Note: The "linked item number" field is provided only in the level 3 database export files.*

How do I get the data?

1. Images – The full set of images are sent with your initial order and each month via CD.
2. The database export files are downloaded via FTP. Your specific login and pass code information will be sent to you via email.
 - The Level 1 and Level 2 export file is in a compressed file named "CBMCSV1.ZIP".
 - The Level 3 export files are in compressed files named "CSVXPRT.ZIP" and "CBMOUT3T.ZIP".

How often are the data files updated?

The export files are updated Monday through Saturday starting at 11:30PM.

What type of help-desk is available? Who do I contact for help?

If you need assistance with how to download the data, data accuracy issues, or data interpretation questions, you can contact Bookstore Manager, Monday through Friday, 8:00am – 6:00pm central. All questions related to how to implement/import the data into your particular system or web site or how to use the data within your system should be directed to your programmer, network administrator or webmaster.

In addition to the data files, do all levels include a stand-alone working copy of the Windows version of CB&M?

Yes, along with its monthly updates!

Are there any “quirks” with the ASCII data that I need to be aware of?

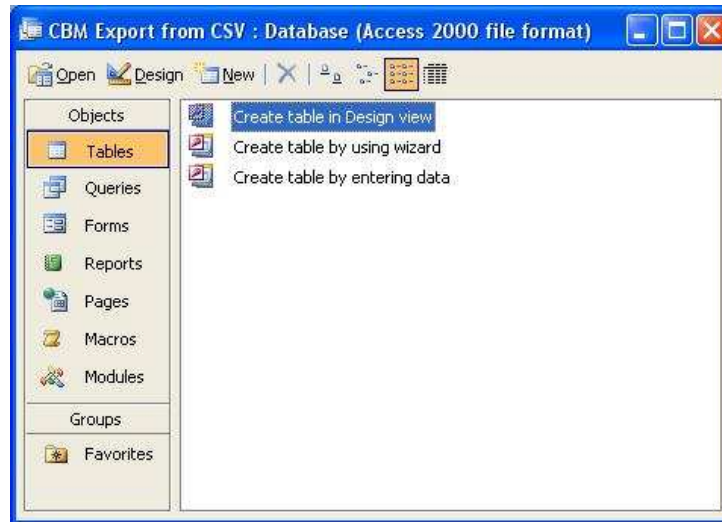
1. Some programs such as Microsoft Excel, will misinterpret the Item # fields as numeric instead of text when the data in the cell is entirely numeric. When this happens, Excel drops the leading zeroes causing an incomplete data import.
2. Some programs (such as Microsoft Excel) are limited to 64K (65,536) items in a spreadsheet. Since some of the Christian Books and More database export files exceed this amount, we don't recommend using Excel for an import. We would recommend starting with Microsoft Access instead. Note: Sample screen shots have been included below showing an import of the CSV files into Microsoft Access 2003.

Can I get a refund if I don't like the export?

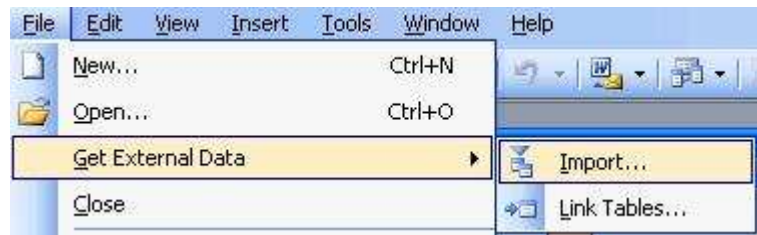
No. The sample files give you the opportunity to work with your programmer, network administrator or webmaster before you purchase the export to make sure you can use the data. Once we provide a link to download the entire database, there are no refunds.

What are the steps to importing CSV files into Microsoft Access?

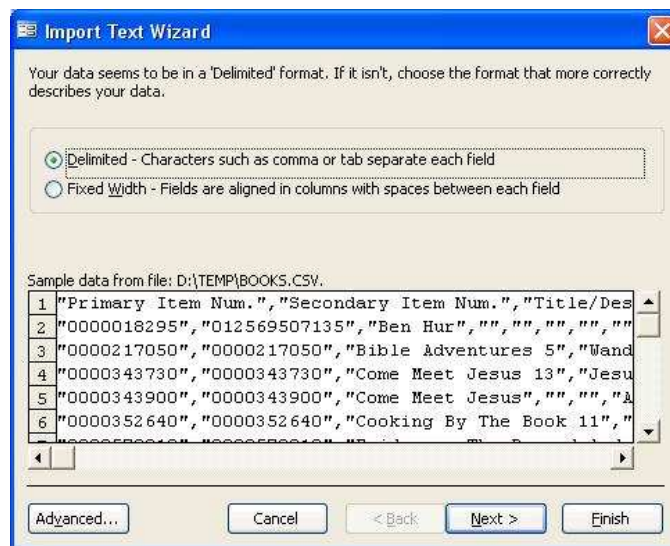
Step 1: Create a new, blank database (screens from Microsoft Access 2003)



Step 2: Click on
File
Get External Data
Import



Step 3: On the first screen of the import wizard, click "Next"



Step 4: On the second screen of the import wizard, check the box titled "First Row Contains Field Names", and then click the "Finish" button



Step 5: A message box will display when the wizard finishes



Step 6: Repeat steps 2-6 for BIBLES.csv, INTLBOOK.csv, MUSIC.csv, SOFTWARE.csv and SONGS.csv). You may also repeat for GIFTOUT.csv and CBMOUTOP.csv.

